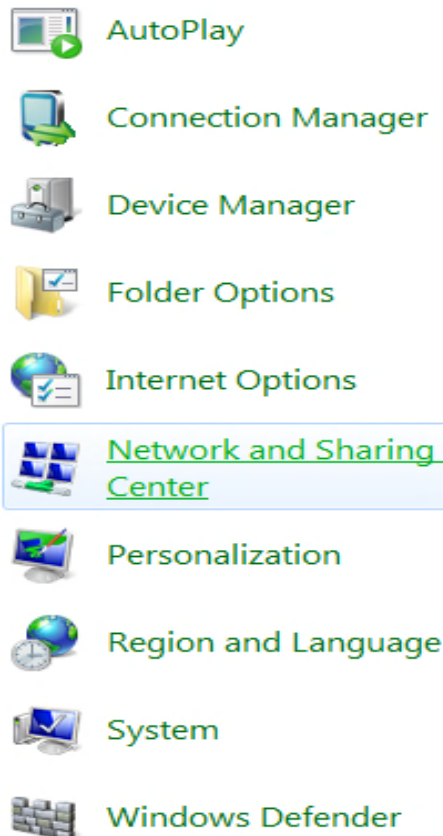


آموزش مرحله به مرحله ایجاد کردن

connection VPN



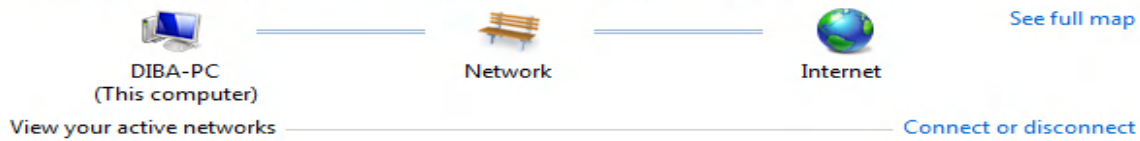
روی دکمه start سپس control panel کلیک کنید.



گزینه فوق را انتخاب نمایید.

View your basic network information and set up connections

[See full map](#)



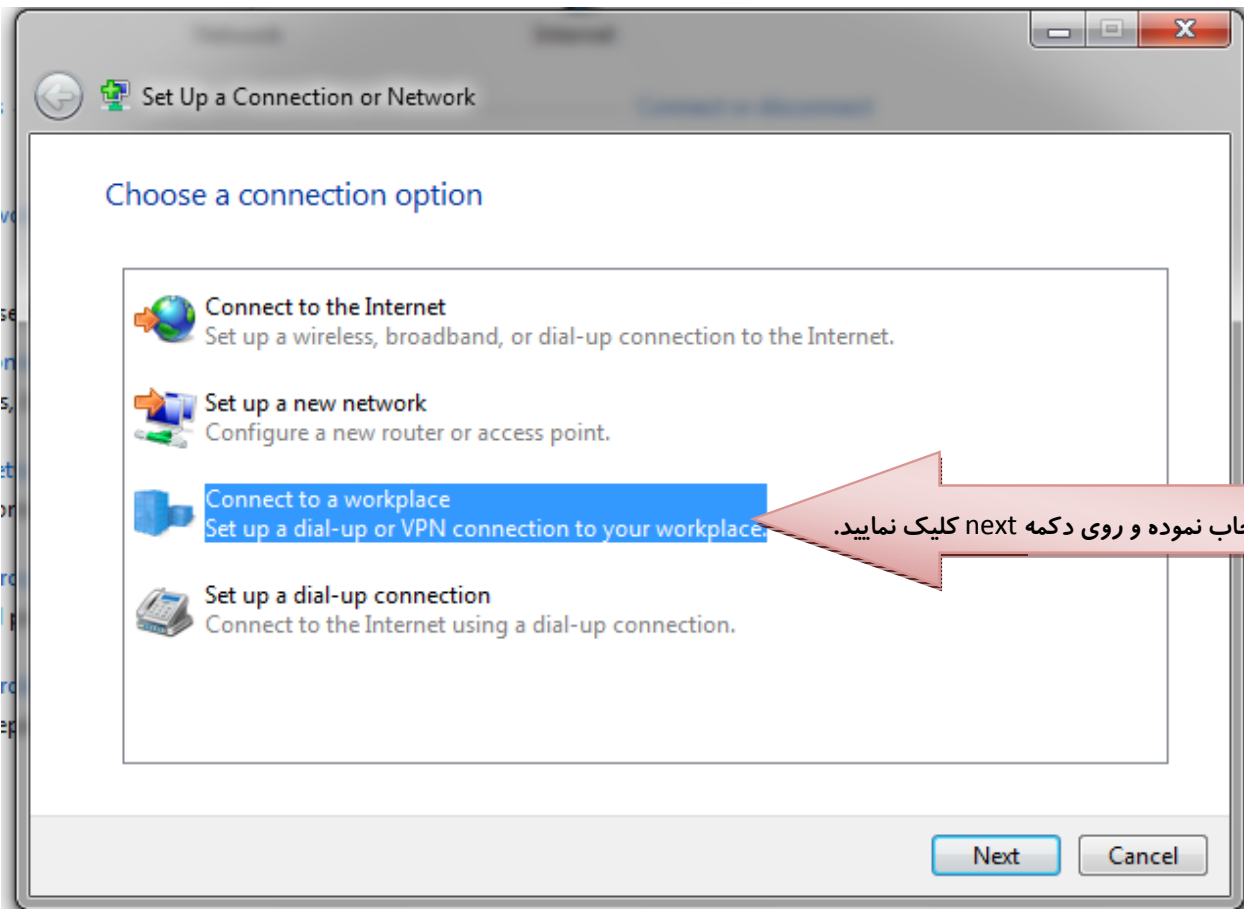
Network
Public network

Access type: Internet
Connections: Local Area Connection

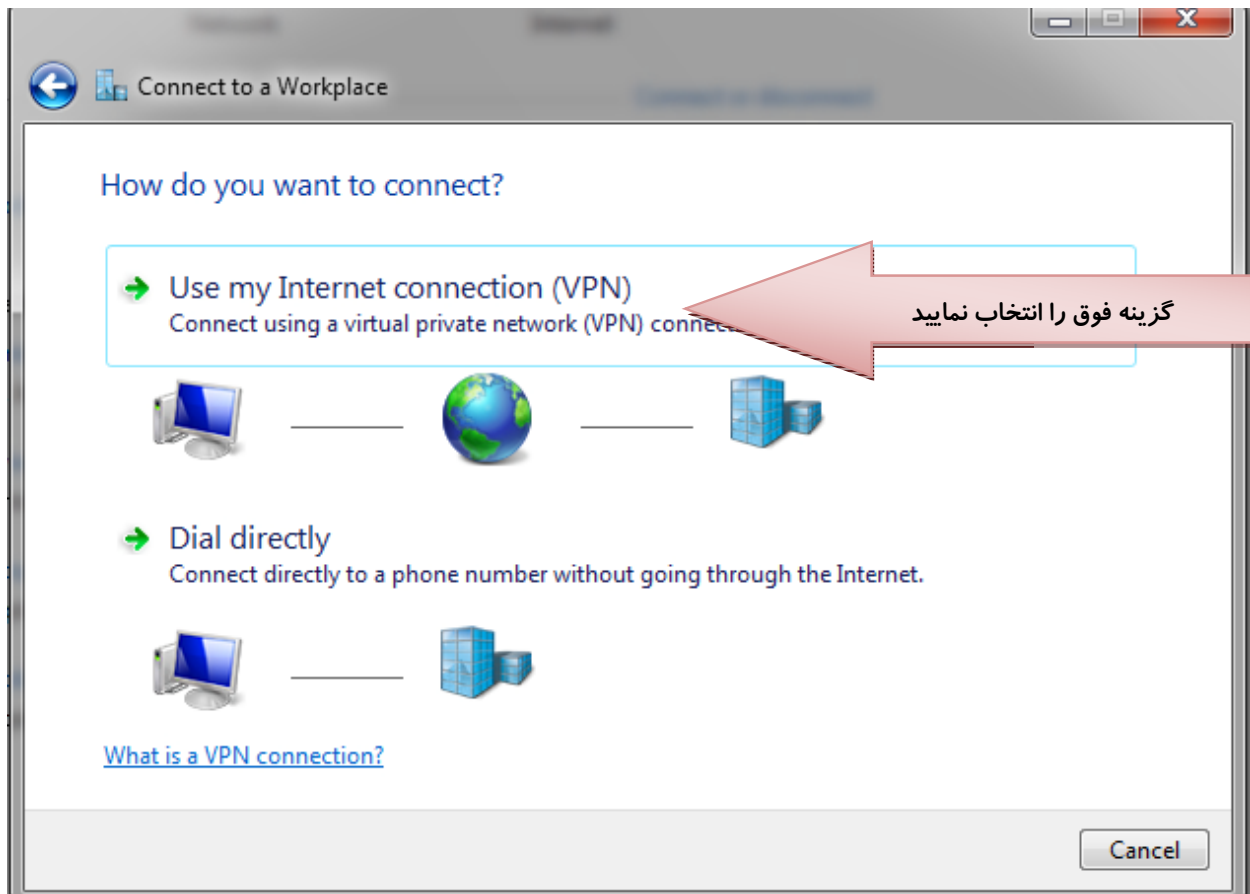
Change your networking settings

- [Set up a new connection or network](#)
Set up a wireless, broadband, dial-up, ad hoc, or VPN connection; or set up a router or access point.
- [Connect to a network](#)
Connect or reconnect to a wireless, wired, dial-up, or VPN network connection.
- [Choose homegroup and sharing options](#)
Access files and printers located on other network computers, or change sharing settings.
- [Troubleshoot problems](#)
Diagnose and repair network problems, or get troubleshooting information.

گزینه فوق را انتخاب نمایید.



گزینه فوق را انتخاب نموده و روی دکمه next کلیک نمایید.



Connect to a Workplace

Type the Internet address to connect to

Your network administrator can give you this address.

Internet address:

Destination name:

Use a smart card

Allow other people to use this connection
This option allows anyone with access to this computer to use this connection.

Don't connect now; just set it up so I can connect later

Connect to a Workplace

Type your user name and password

User name:

Password:

Show characters

Remember this password

Domain (optional):

نام کاربری و رمز عبور خود را وارد نمایید. سپس روی دکمه connect کلیک نمایید.